



FCC TEST REPORT


Applicant: SYSOLUTION

Address: 2 / F, Building B, Sanlian Industrial Zone, Songbai Road, Shiyan Street, Bao 'an District, Shenzhen

Manufacturer: SYSOLUTION

Address: 2 / F, Building B, Sanlian Industrial Zone, Songbai Road, Shiyan Street, Bao 'an District, Shenzhen

EUT: Control System

Trade Mark:  熙讯科技
— SYSOLUTION —

Model Number: Y50
Y12, Y40, Y60C, Y70, Y03, Y08, Y08S, KD02, KD03, KD04, KD05, KD07, K20S, K30, M40, M50D, M50B-D, RTD1, RS5S, ST50B, R56S, M60B-S, M70B-S, M80B-S, D60-8, D60-12, D60-16, D60-B6S, D60-320, D70-A8S, D70-16, D90-8, D90

Date of Receipt: Jul. 07, 2023

Test Date: Jul. 07, 2023 - Jul. 12, 2023

Date of Report: Jul. 12, 2023

Prepared By: Shenzhen DL Testing Technology Co., Ltd.

Address: 101-201, Building C, Shuanghuan, No.8, Baoqing Road, Baolong Industrial Zone, Baolong Street, Longgang District, Shenzhen, Guangdong, China

Applicable Standards: FCC Part 15 Subpart B
ANSI C63.4:2014

Test Result: Pass

Report Number: DL-20230712002E

Prepared (Test Engineer): HuiLian Xu

Reviewer (Supervisor): Jack Bu

Approved (Manager): Jade Yang



This test report is based on a single evaluation of one sample of above mentioned products. It is not permitted to be duplicated in extracts without written approval of Shenzhen DL Testing Technology Co., Ltd.



TABLE OF CONTENT

Test Report Declaration	Page
1. VERSION.....	3
2. TEST SUMMARY.....	3
3. GENERAL INFORMATION.....	4
4. TEST INSTRUMENT USED.....	5
5. CONDUCTED EMISSION TEST	6
6. RADIATION EMISSION TEST	8
7. EUT PHOTOGRAPHS	12

**1. VERSION**

Version No.	Date	Description
00	Jul. 12, 2023	Original

2. TEST SUMMARY

EMC Emission				
Standard	Test Item	Limit	Result	Remark
FCC PART 15 B	Conducted Emission at power ports	Class B	N/A	
	Radiated Emission below 1GHz	Class B	PASS	
	Radiated Emission above 1GHz	Class B	N/A	

NOTE:

(1) "N/A" denotes test is not applicable in this Test Report

(2) Test Facility: Shenzhen DL Testing Technology Co., Ltd.

Address: 101-201, Building C, Shuanghuan, No.8, Baoqing Road, Baolong Industrial Zone, Baolong Street, Longgang District, Shenzhen, Guangdong, China



3. GENERAL INFORMATION

3.1 Description of Device (EUT)

EUT: Control System

Trade Mark:



Y50

Model Number:

Y12, Y40, Y60C, Y70, Y03, Y08, Y08S, KD02, KD03, KD04, KD05, KD07, K20S, K30, M40, M50D, M50B-D, RTD1, RS5S, ST50B, R56S, M60B-S, M70B-S, M80B-S, D60-8, D60-12, D60-16, D60-B6S, D60-320, D70-A8S, D70-16, D90-8, D90

Test Model:

Y50

Model difference:

The product's different for model number and appearance color.

Power Supply:

DC 12V 0.9A, 3A Max, 10W

Working Frequency:

Below 108MHz

NOTE:

- (1) For a more detailed features description, please refer to the manufacturer's specifications or the User's Manual.
- (2) The EUT's all information provided by client.

3.2 Tested System Details

None.

3.3 Block Diagram of Test Set-up

DC Mains



3.4 Test Mode Description

Mode1. On Mode

3.5 Test Auxiliary Equipment

None.

3.6 Test Uncertainty

Conducted Emission Uncertainty : $\pm 2.56\text{dB}$

Radiated Emission Uncertainty : $\pm 3.24\text{dB}$



4. TEST INSTRUMENT USED

For Conducted Emission Test (843 Shielded Room)

Equipment	Manufacturer	Model	Serial	Last Cal.	Next Cal.
843 Shielded Room	ChengYu	843 Room	843	Sep. 20, 2022	Sep. 19, 2025
EMI Receiver	R&S	ESR	101421	Nov. 05, 2022	Nov. 04, 2023
LISN	R&S	ENV216	102417	Nov. 05, 2022	Nov. 04, 2023
Clamp	COM-POWER	CLA-050	431072	Nov. 05, 2022	Nov. 04, 2023
3-Loop Antenna	DAZE	ZN30401	13021	Nov. 05, 2022	Nov. 04, 2023
ISN T8	Schwarzbeck	NTFM 8158	101135	Nov. 05, 2022	Nov. 04, 2023
ISN T5	Schwarzbeck	NTFM 8158	101136	Nov. 05, 2022	Nov. 04, 2023
843 Cable 1#	ChengYu	CE Cable	001	Nov. 05, 2022	Nov. 04, 2023
843 Cable 1#	ChengYu	CE Cable	002	Nov. 05, 2022	Nov. 04, 2023

For Radiated Emission Test (966 chamber)

Equipment	Manufacturer	Model	Serial	Last Cal.	Next Cal.
966 chamber	ChengYu	966 Room	966	Sep. 20, 2022	Sep. 19, 2025
Spectrum Analyzer	Agilent	E4408B	MY50140780	Nov. 05, 2022	Nov. 04, 2023
EMI Receiver	R&S	ESRP7	101393	Nov. 05, 2022	Nov. 04, 2023
Amplifier	Schwarzbeck	BBV9743B	00153	Nov. 05, 2022	Nov. 04, 2023
Amplifier	EMEC	EM01G8GA	00270	Nov. 05, 2022	Nov. 04, 2023
Broadband Trilog Antenna	Schwarzbeck	VULB9162	00306	Nov. 05, 2022	Nov. 04, 2023
Horn Antenna	Schwarzbeck	BBHA9120D	02139	Nov. 05, 2022	Nov. 04, 2023
966 Cable 1#	ChengYu	966	004	Nov. 05, 2022	Nov. 04, 2023
966 Cable 2#	ChengYu	966	003	Nov. 05, 2022	Nov. 04, 2023

Other

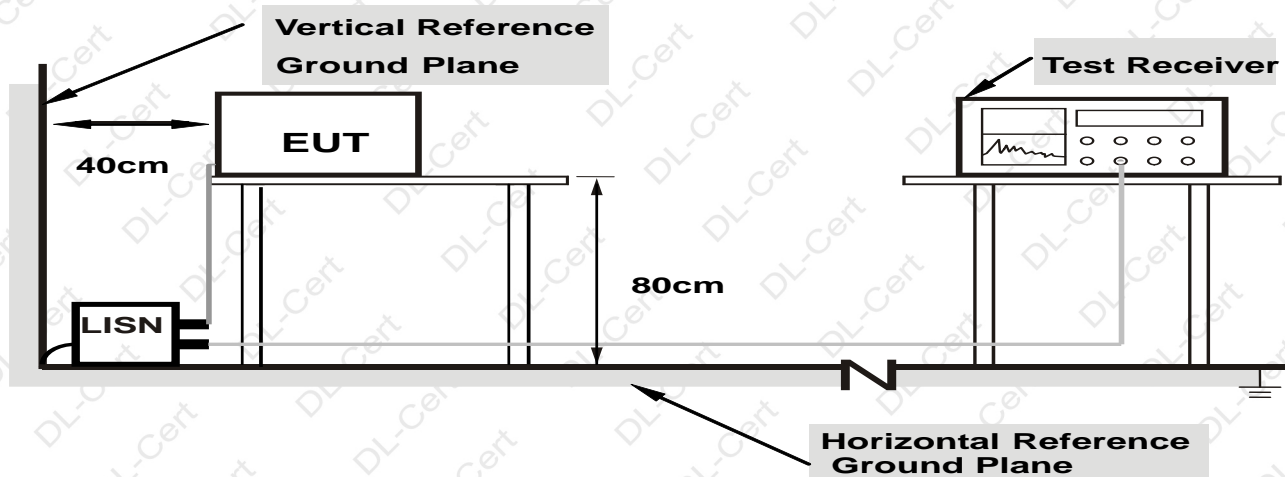
Name	Manufacturer	Model	Software version
EMC Conduction Test System	FALA	EZ EMC	EMC-CON 3A1.1
EMC radiation test system	FALA	EZ EMC	FA-03A2



5. CONDUCTED EMISSION TEST

5.1 Block Diagram of Test Setup

For Mains Terminals Test



Note: 1.Support units were connected to second LISN.

2.Both of LISNs (AMN) are 80 cm from EUT and at least 80 cm from other units and other metal planes

5.2 Test Standard and Limit

FCC PART 15 B

Frequency MHz	Limits dB(μ V)	
	Quasi-peak Level	Average Level
0.15~0.50	66 ~ 56*	55 ~ 46*
0.50~5.00	56	46
5.00~30.00	60	50

Notes: 1. *Decreasing linearly with logarithm of frequency.

2. The lower limit shall apply at the transition frequencies.

5.3 EUT Configuration on Test

The following equipment's are installed on conducted emission test to meet FCC PART 15 B requirement and operating in a manner which tends to maximize its emission characteristics in a normal application.

5.4 Operating Condition of EUT

5.4.1 Setup the EUT and simulators as shown in Section 5.1.

5.4.2 Turn on the power of all equipments.

5.4.3 Let the EUT work in test modes and test it.



5.5 Test Procedure

The EUT is put on the table and connected to the AC mains through a Artificial Mains Network (AMN) or ISN. This provided a 50ohm coupling impedance for the tested equipments. Both sides of AC line are checked to find out the maximum conducted emission levels according to the **ANSI C63.4** regulations during conducted emission test.

The bandwidth of the test receiver (R&S Test Receiver ESR) is set at 10KHz.

The frequency range from 150 KHz to 30 MHz is investigated.

5.6 Test Result

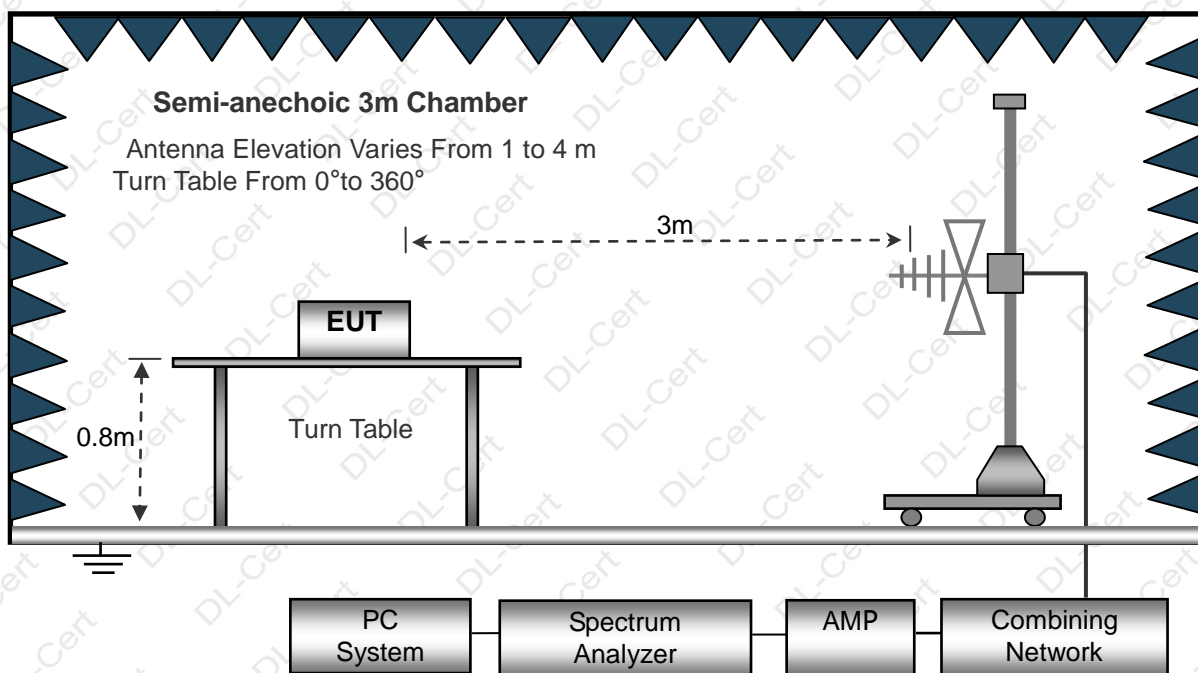
The EUT is powered by DC, no requirements for this item.



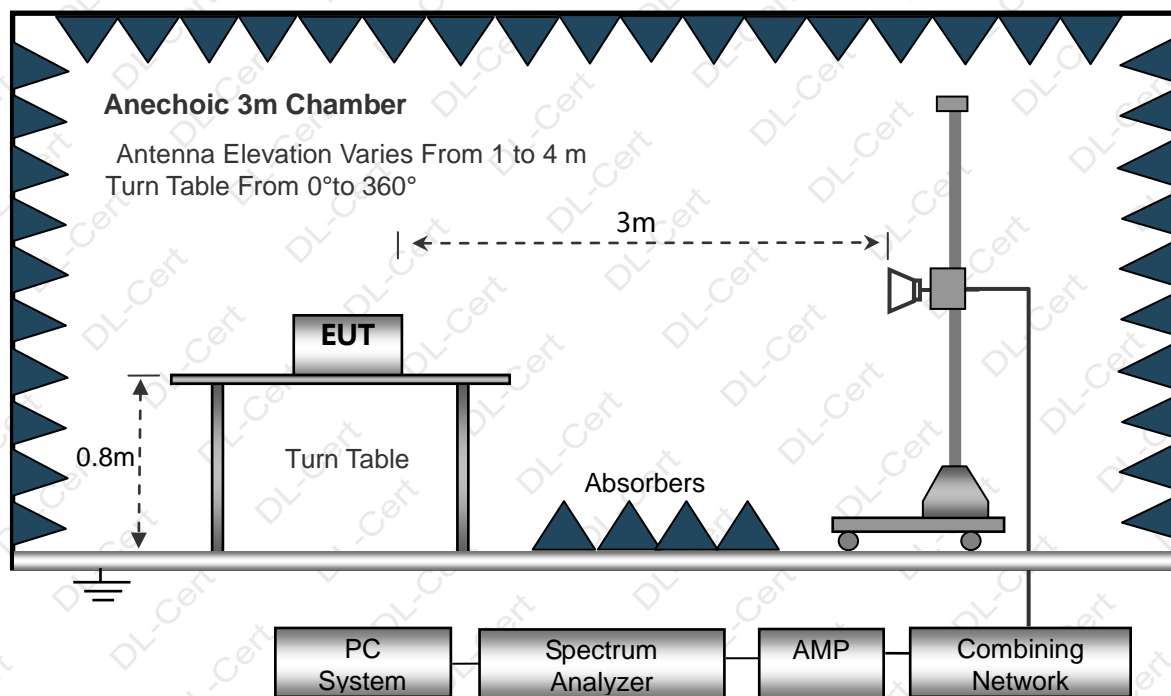
6. RADIATION EMISSION TEST

6.1 Block Diagram of Test Setup

Below 1GHz



Above 1GHz



6.2 Test Standard and Limit

FCC PART 15 B



Below 1GHz

Frequency (MHz)	Distance (Meters)	Field Strengths Limits (dB μ V/m)
30 ~ 88	3	40.0
88 ~ 216	3	43.5
216 ~ 960	3	46.0
960 ~ 1000	3	54.0

Above 1GHz

Frequency MHz	Distance (Meters)	Field Strengths Limits dB(μ V)/m	Detector
1000~6000	3	74.0	PEAK
1000~6000	3	54.0	AVERAGE

Remark:

(1) The smaller limit shall apply at the cross point between two frequency bands.

(2) Distance refers to the distance in meters between the measuring instrument, antenna and the closed point of any part of the device or system.

6.3 EUT Configuration on Test

The FCC PART 15 B regulations test method must be used to find the maximum emission during radiated emission test.

The configuration of EUT is the same as used in conducted emission test.

Please refer to Section 5.3.

6.4 Operating Condition of EUT

Same as conducted emission test, which is listed in Section 5.4 except the test set up replaced as Section 6.2.

6.5 Test Procedure

- 1) The radiated emissions test was conducted in a semi-anechoic chamber.
- 2) The tabletop EUT was placed upon a non-metallic table 0.8m above the ground reference plane. And for floor-standing arrangement, the EUT was placed on the horizontal ground reference plane, but separated from metallic contact with the ground reference plane by 0.1m of insulation.
- 3) Before final measurements of radiated emissions, a pre-scan was performed in the spectrum mode with the peak detector to find out the maximum emissions spectrum plots of the EUT.
- 4) The frequencies of maximum emission were determined in the final radiated emissions measurement. At each frequency, the EUT was rotated 360°, and the antenna was raised and lowered from 1 to 4 meters in order to determine the maximum disturbance. Measurements were performed for both horizontal and vertical antenna polarization.
- 5) The bandwidth setting on the field strength meter (R&S Test Receiver ESCI) is set at 120KHz.
- 6) The frequency range from 30MHz to 1000MHz is checked.

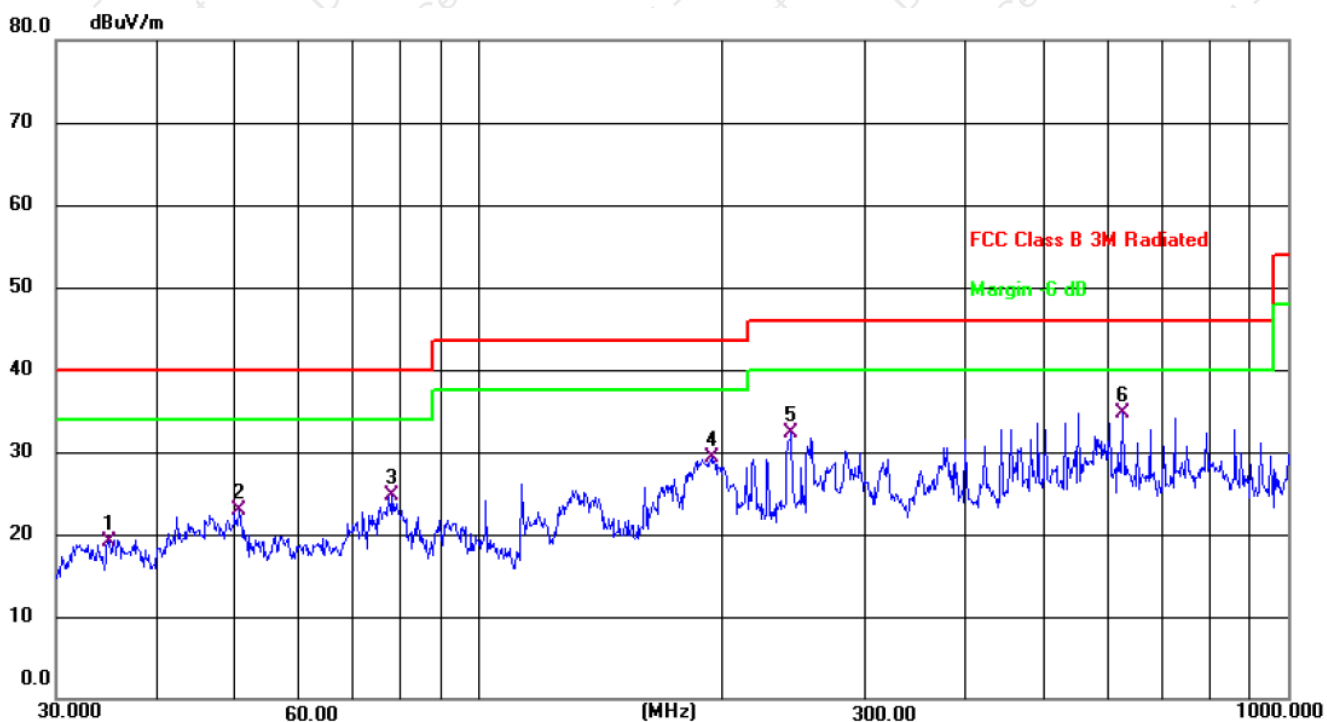
6.6 Test Result

The EUT is powered by DC, no requirements for this item.



Radiation Emission Test Data

Temperature:	24.5℃	Relative Humidity:	54%
Pressure:	1009hPa	Polarization:	Horizontal
Test Voltage:	DC 12V	Test Mode:	Mode 1



No.	Mk.	Freq.	Reading Level	Correct Factor	Measurement	Limit	Margin	
		MHz	dBuV	dB	dBuV/m	dB/m	dB	Detector
1		34.8821	32.63	-13.43	19.20	40.00	-20.80	QP
2		50.4089	34.48	-11.49	22.99	40.00	-17.01	QP
3		78.1388	40.56	-15.93	24.63	40.00	-15.37	QP
4		193.7726	42.90	-13.69	29.21	43.50	-14.29	QP
5		243.3771	44.20	-11.96	32.24	46.00	-13.76	QP
6	*	625.0778	39.95	-5.22	34.73	46.00	-11.27	QP

Remark:

Correct Factor=Cable loss+Antenna factor-Preamplifier

Measurement Level = Reading Level + Correct Factor; Margin = Measurement Level- Limit;



Radiation Emission Test Data

Temperature:	24.5℃	Relative Humidity:	54%
Pressure:	1009hPa	Polarization:	Vertical
Test Voltage:	DC 12V	Test Mode:	Mode 1



No.	Mk.	Freq.	Reading Level	Correct Factor	Measurement	Limit	Margin	
		MHz	dBuV	dB	dBuV/m	dB/m	dB	Detector
1		41.7129	38.70	-12.34	26.36	40.00	-13.64	QP
2		70.5835	42.46	-15.15	27.31	40.00	-12.69	QP
3		124.1329	45.23	-15.68	29.55	43.50	-13.95	QP
4		257.4221	45.95	-10.75	35.20	46.00	-10.80	QP
5		401.8383	44.81	-8.26	36.55	46.00	-9.45	QP
6	*	833.3170	40.49	-0.82	39.67	46.00	-6.33	QP

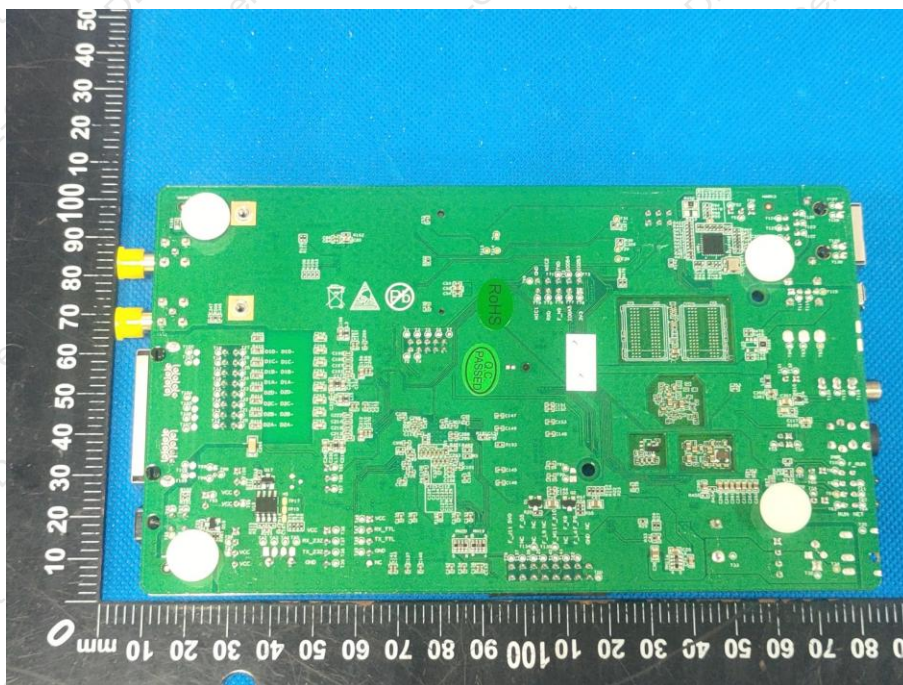
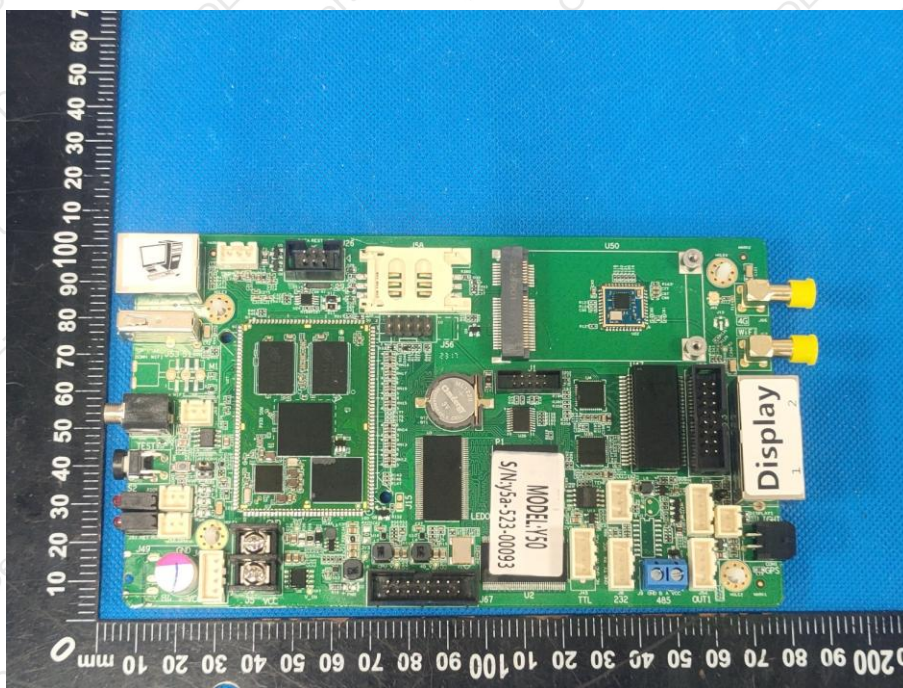
Remark:

Correct Factor=Cable loss+Antenna factor-Preamplifier

Measurement Level = Reading Level + Correct Factor; Margin = Measurement Level- Limit;



7. EUT PHOTOGRAPHS



***** END OF REPORT *****